

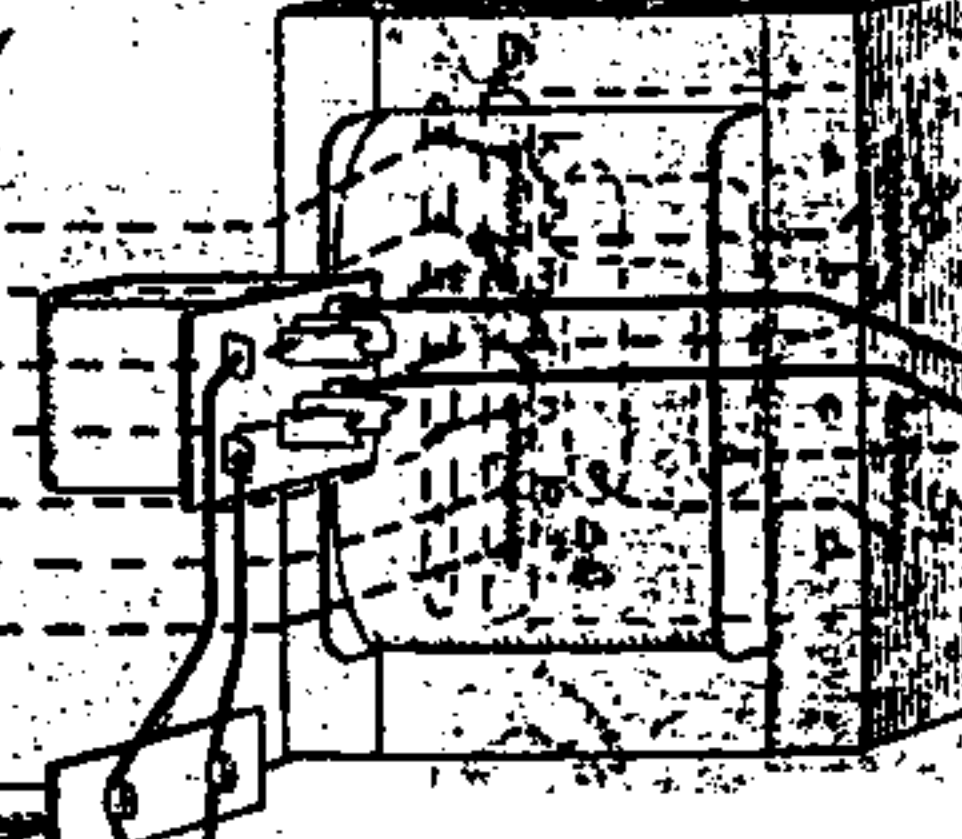
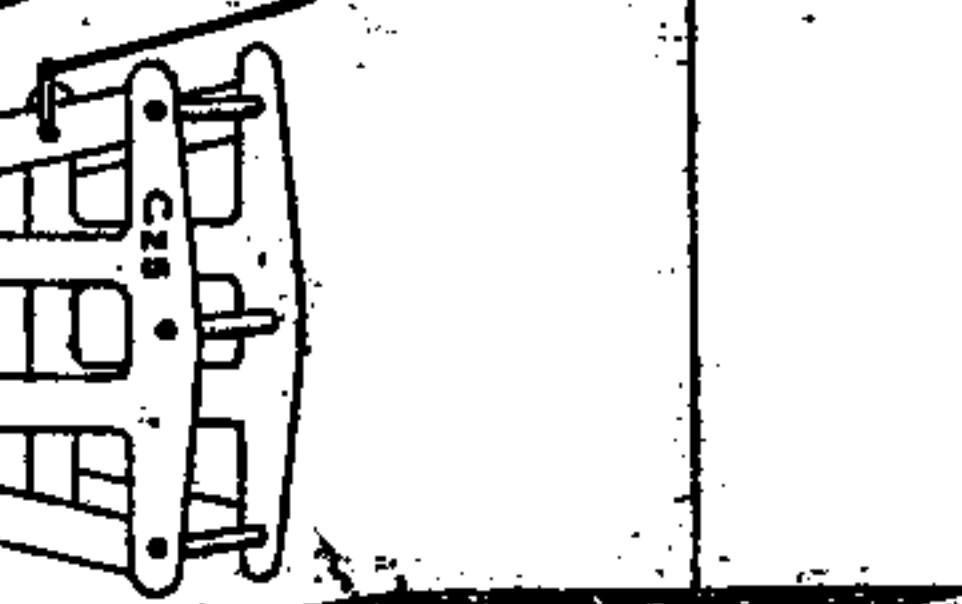
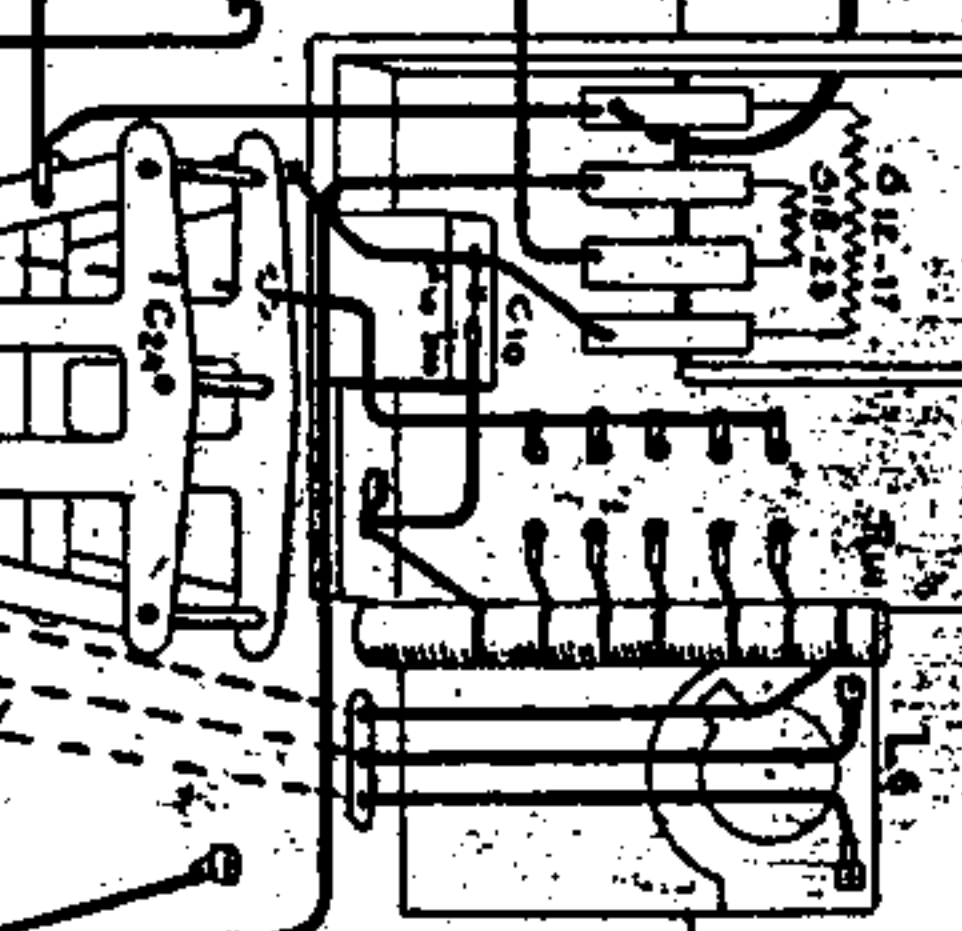
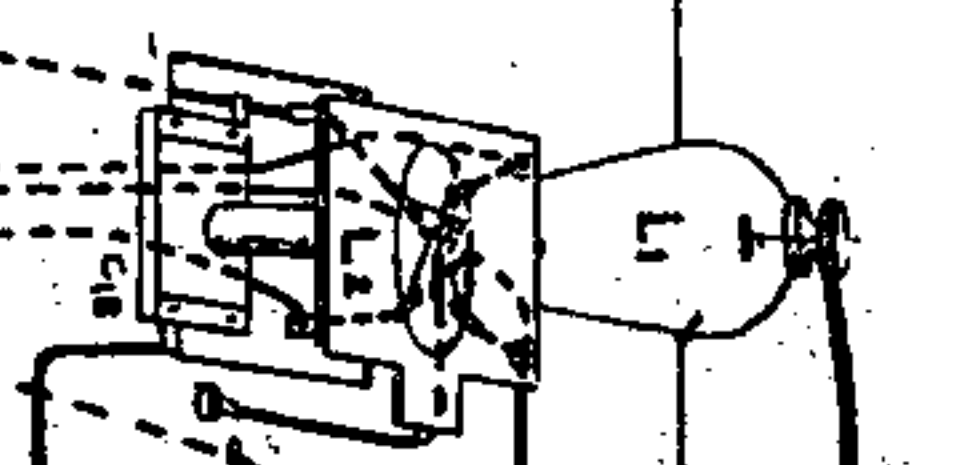
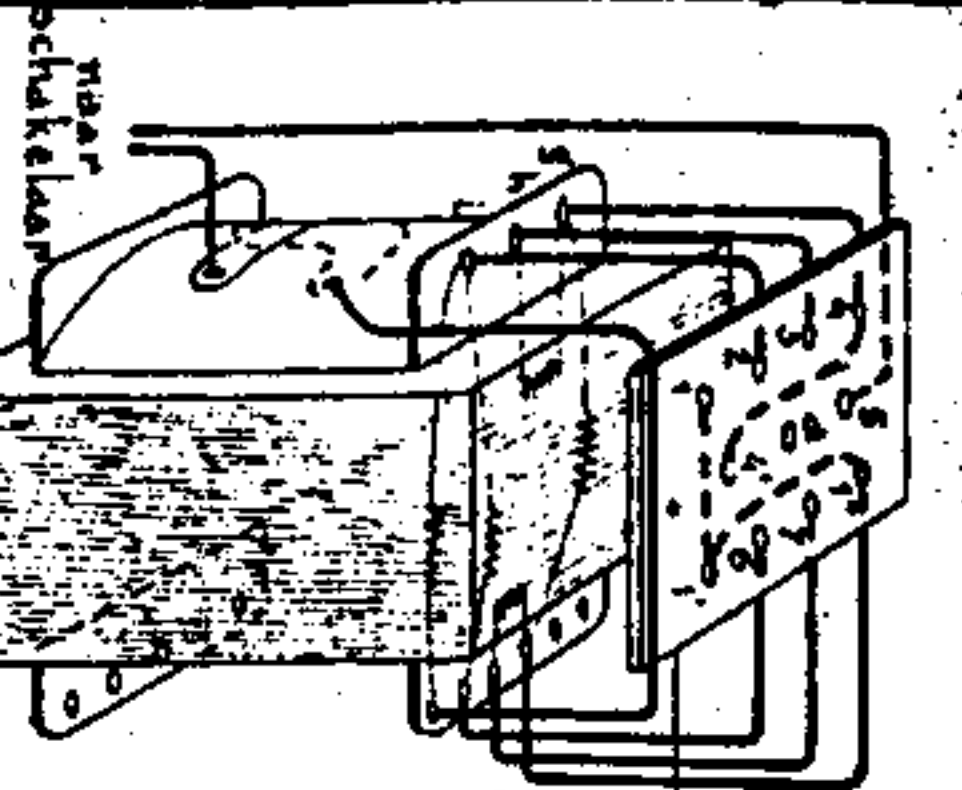
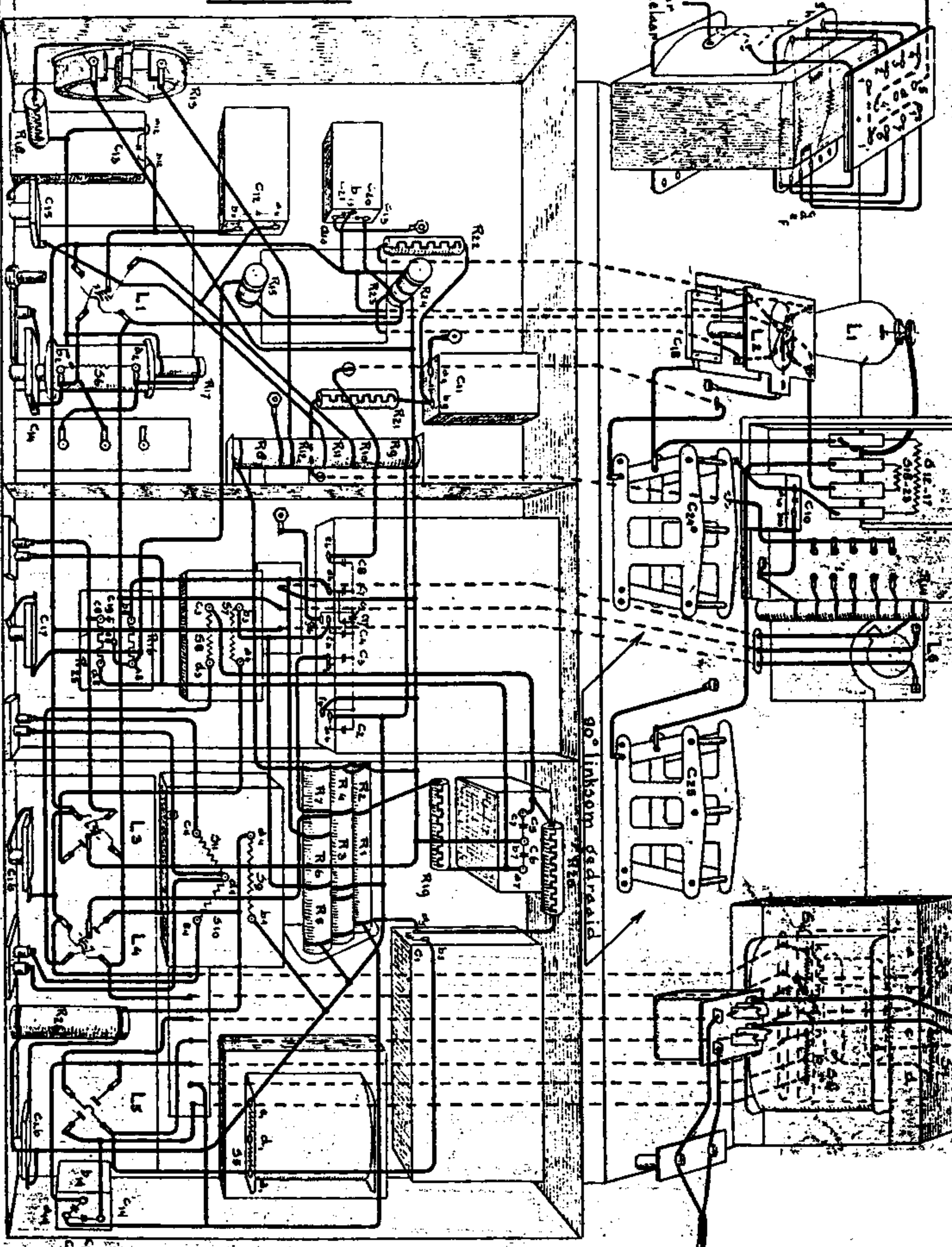
2801

Dat. 10-2-31

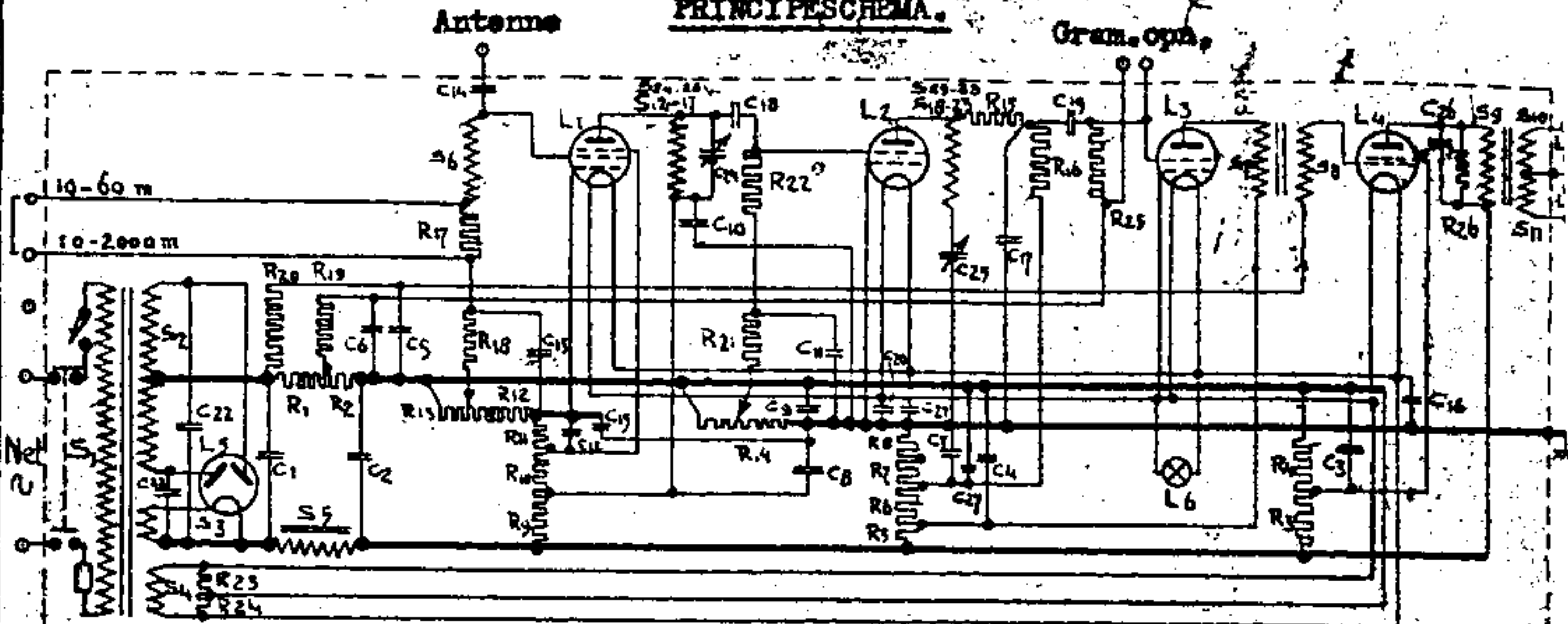
MONTAAGESCHEMA

Met is niet geoorloofd dit blad aan derden uit te leenen of af te steen, zonder voorkennis van de afdeeling Fabricagevoorschriften B.

ORIENTATIE



PRINCIPESCHEMA.



SPOELN	BEREKENK.	CONDENSATOREN	BEREKENK.	WEERSTANDEN	BEREKENK.
S1 = 820		C1 = 4,5 μF	010032, 010049	R1 = 370 ohm	
S2 = 2x1090	A 10260 bl. 1	C2 = 4	C 10032	R2 = 130	W 10374
S3 = 16		C3 = 1	C 10029	R3 = 14000	
S4 = 16		C4 = 2	C 10028	R4 = 60000	W 10369
S5 = Univ. tr.	A 10260 bl. 2	C5 = 0,5	C 10034	R5 = 8500	
S6 = 9000	A 15013	C6 = 0,5	C 10029	R6 = 6000	W 10404
S7 = 60	A 10286	C7 = 1	C 10029	R7 = 10000	
S8 = 3600		C8 = 2	C 10028	R8 = 15000	
S9 = 21600	A 10210	C9 = 0,5	C 10044	R9 = 18000	
S10 = 3750		C10, C11 = 0,5 nF	C 10065	R10 = 50000	W 10392
S11 = 375	A 10233	C14 = C16 = 100 μF	C 10086	R11 = 40000	
S12 = 3000		C17 = 160 μF	C 10094	R12 = 300	
S13 = 2	A 10336	C18 = 100	C 10075	R13 = 3600	W 10413
S14 = 4	A 10204 <sup>2</sup>	C19 = 8000	C 10076	R14 = 5x25	W 10379
S15 = 7	A 10272	C20-C21 = 11000	C 10010	R15 = 1000	W 10359
S16 = 12	A 10204 <sup>3</sup>	C22-C23 = 11000		R16 = 7000	W 10134
S17 = 17	A 10372	C24 = 200 μF		R17 = 2500	W 10141
S18 = 25	A 10204 <sup>4</sup>	C25 = 200		R18 t/m R22 = 0,2 M. ohm	
S19 = 2	A 10336	C26 = 3200	C 10078	R23-R24 = 6 ohm	W 10138
S20 = 3	A 10204 <sup>2</sup>	C27 = 2 μF	C 10028	R25 = 1 M. ohm	
S21 = 5	A 10272			R26 = 40000 ohm	W 10428
S22 = 5	A 10204 <sup>3</sup>				
S23 = 8	A 10372				
S24 = 10	A 10204 <sup>4</sup>				

SPOELN	BEREKENK.
S24 = 39	A 10373
S25 = 65	A 10204 <sup>5</sup>
S26 = 115	A 10374
S27 = 191	A 10204 <sup>6</sup>
S28 = 300	A 10375
S29 = 13	A 10373
S30 = 17	A 10204 <sup>5</sup>
S31 = 24	A 10374
S32 = 33	A 10204 <sup>6</sup>
S33 = 50	A 10375

LAMPEN
L1 = E 442
L2 = E 424
L3 = E 424
L4 = C 443
L5 = 506
L6 = 8046

BYBEOORDENDI SCHEMA	
Univ. tr. S1	W 10155
L.F. tr. S7, 8	W 10250
Outp. tr. S9, 10, 11	W 10257
S12, S18	W 10219
S13, S19	W 10219
S24, S20	W 10219
S15, S21	W 10219
S16, S22	W 10219
S17, S23	W 10219
Cond. deos C1	W 10332
Cond. deos C2, 3, 4, 7, 8, 9, 10, 15	W 10331
Cond. deos C5, 6	W 10331
Cond. deos C10, C11	W 10331
Cond. deos C12, C13	W 10335
Unit. R16, R25, S19	W 10104
Cond. deos C20, C21	W 10318
Cond. deos C22, C23	W 10010

\* Deze spoelen worden pp bestelling bygeleverd.